



FLOAT GAUGE

INDICATING DUCT WITH BALANCE WEIGHT TYPE

515

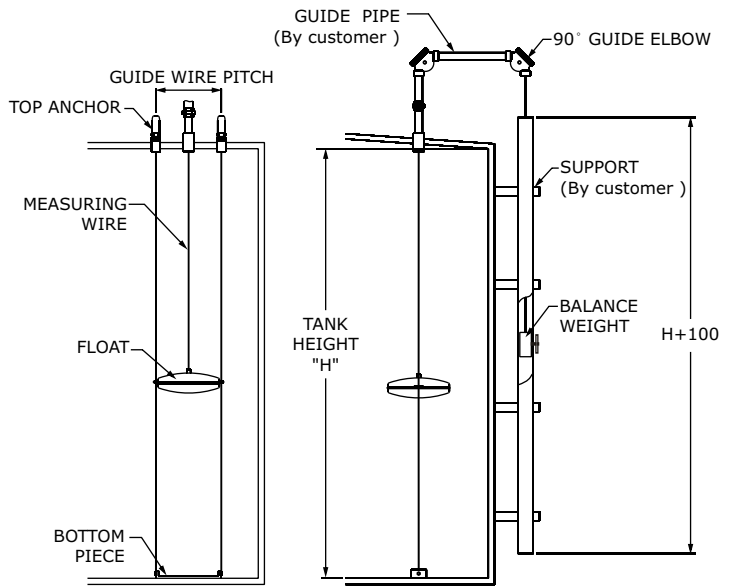
FEATURES

- EASY TO INSTALL / MAINTENANCE FREE
- NON-GEARS / SPRINGS STRUCTURE
- SIMPLICITY / ECONOMICAL
- ALARM SWITCHES / LEVEL TRANSMITTER CAN BE ADDED IF NECESSARY

SPECIFICATIONS

MEASURING RANGE	12M max.
DENSITY	SP.GR. 0.6~1.9
VISCOSITY	600 cPs max.
OPERATING PRESSURE	1 atm
OPERATING TEMPERATURE	-190~+400°C
AMBIENT TEMPERATURE	60°C max.
CONNECTION OF	
TOP ANCHOR	1"PT or options
GUIDE ELBOW (90°)	1½"PT or options
MOUNTING FOR DUCT	Bolts M8 or welding

INSTALLATION EXAMPLE

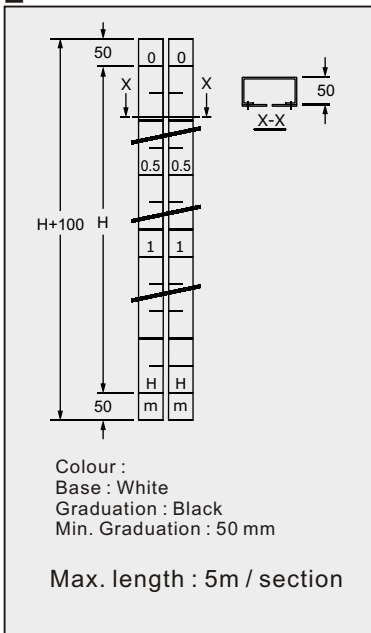


MATERIAL

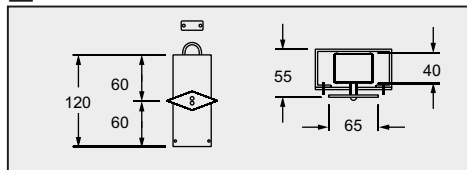
CODE	FLOAT	AVAILABLE COMPONENT							
		Measuring wire	Top Anchor	Guide Elbow 90°	Guide Wire	Bottom Piece	Indicating Duct	Balance Weight	Ruler
0	304SS	304SS	Aluminum Alloy	Aluminum Alloy	304SS	304SS	SS400	SS400	Acrylic
1	304SS	304SS			304SS	304SS	304SS	304SS	304SS
2	304SS	304SS	304SS	304SS	304SS	304SS	304SS	304SS	Acrylic
3	316SS	316SS	304SS	304SS	316SS	316SS	304SS	304SS	304SS
4	To be specified								

COMPONENTS

INDICATING DUCT WITH RULER



BALANCE WEIGHT



TOP ANCHOR

P / N	CONNECTION	MATERIAL
AE2-3L	1" PT	AC2A
AE2-3R	1" PT	SCS13
AE2-3M	1" PT	SCS14
AE2-3B	1" ANSI 150#	SCS13
AE2-3S	To be specified	

BOTTOM ANCHOR

P / N	TYPE	MATERIAL
AE1-3L	L-ANCHOR	304SS
AE1-3R	L-ANCHOR	316SS
AE1-3M	ANCHOR WEIGHT	304SS
AE1-3B	ANCHOR WEIGHT	316SS
AE1-3S	To be specified	

COMPONENTS

FLOAT

	P / N	A GUIDE WIRE PITCH	FLOAT DIA.
	515A	305 mm	∅ 265 mm
	515B	340 mm	∅ 300 mm
	515C	440 mm	∅ 400 mm
	515D	To be specified	

GUIDE SHEAVE

P / N	ANGLE	CONNECTION	MATERIAL
AE3-3L	90°	1½" PT(F)	AC2A
AE3-3R	90°	1½" PT(F)	SCS13
AE3-3M	90°	1½" ANSI 150lb RF	SCS13
AE3-3B	135°	1½" ANSI 150lb RF	SCS13
AE3-3S	To be specified		

MODEL SELECTIONS

ITEMS	CODE	SPECIFICATIONS
① Model (Float dia.)	515A	Float dia. ∅265 mm
	515B	Float dia. ∅300 mm
	515C	Float dia. ∅400 mm
	515D	To be specified
② MATERIAL (Table 1)	-0	See table 1
	∧	
	-4	
③ CONNECTION OF GUIDE ELBOW 90°	0	1½"PT(F) Standard
	1	1½"NPT(F)
	2	1½" ANSI 150# Flange
	3	To be specified
④ CONNECTION OF TOP ANCHOR	0	1"PT
	1	1"NPT
	2	1" ANSI 150# Flange
	3	To be specified
⑤ MOUNTING OF DUCT	-A	Bolts mounting (M8)
	-B	Welding
	-C	To be specified
⑥ ALARM SWITCH	A	Not required
	B	With one point switch
	C	With two points switch
	D	To be specified
⑦ TRANSMITTER	A	Not required
	B	4~20mADC for 300 series
	C	4~20mADC for 310 series
	D	4~20mADC for 320 series
	E	4~20mADC for 330 series
	F	To be specified
⑨ MEASURING RANGE	-05	5M
	∧	∧
	-12	12M

The specifications are subject to change without prior notice.

2K803-A0

DOERS TECHNOLOGY CORPORATION

4F, NO. 1, LANE 11, TZU CHIANG STREET, TU-CHENG
INDUSTRIAL PARK, TAIPEI COUNTY, TAIWAN 23678

Http://www.doers.com.tw

E-mail:doers.tech@msa.hinet.net

TEL : 886-2-22682689

FAX : 886-2-22681248

