



BIMETAL & FILLED STYLE THERMOMETERS

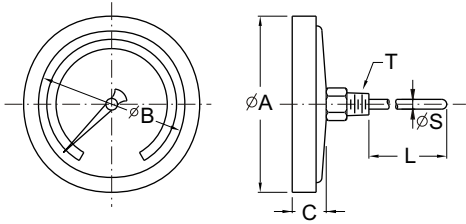
420 430

FEATURES

- HIGH RELIABILITY
- RIGID STRUCTURE
- ANTICORROSIVE MATERIAL
- SPECIFIED VERSIONS ARE POSSIBLE

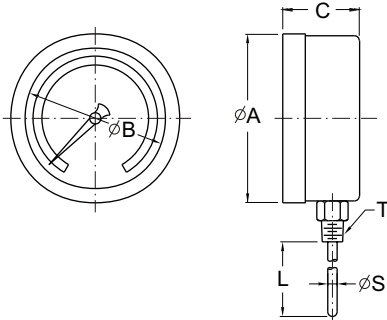
DIMENSIONS (m/m)

420A

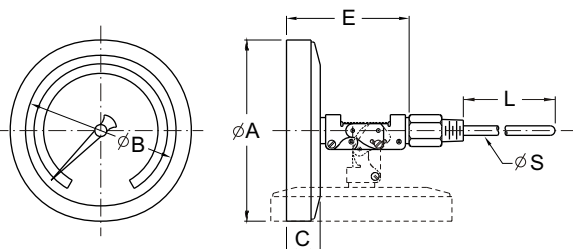


MODEL	NOMINAL SIZE	DIMENSIONS					
		A	B	C	S	L	T
420A	1"	26	22	7	$\phi 4$ $\phi 12$	Min. length } 1500	1/4"PT
	1-1/2"	34.6	30	11			
	2"	51	43	12			
	2-1/2"	65	57	14			1/2"PT NPT
	3"	80.5	70	19			
	4"	119	101	20			
5"	130	114	22				
6"	160	140	32				

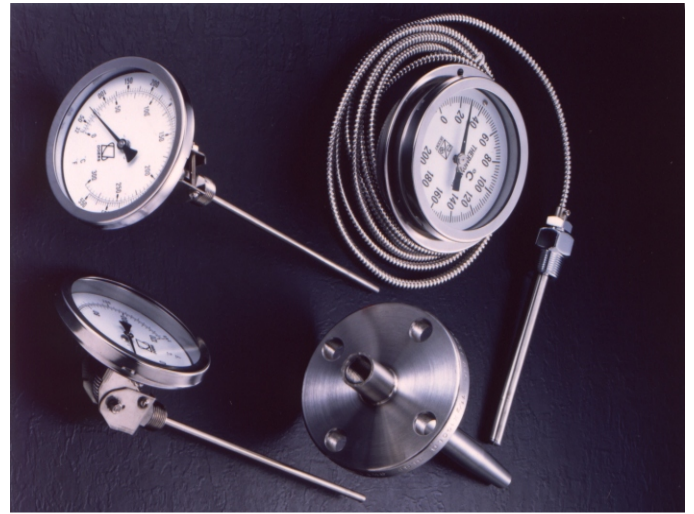
420B



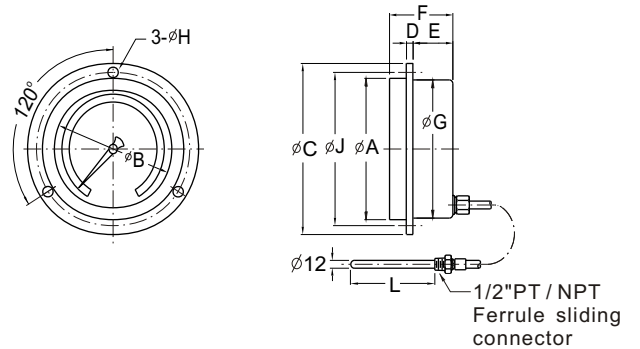
420C



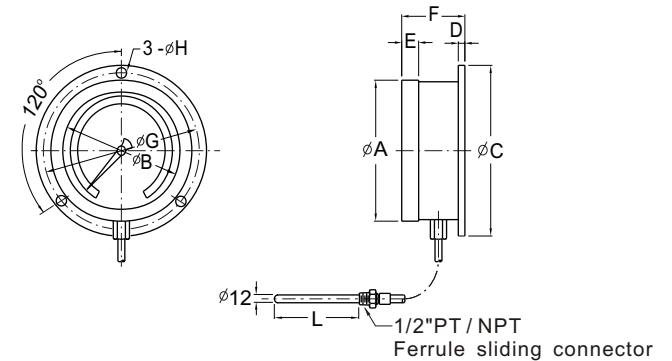
MODEL	NOMINAL SIZE	DIMENSIONS						
		A	B	C	E	S	L	T
420B	3"	85	70	43		$\phi 4$ $\phi 12$	Min. length } 1500	1/4"PT
	4"	119	101	47				1/2"PT NPT
	6"	160	140	46				1/4"PT
420C	3"	85	70	75	94	$\phi 12$	Min. length } 1500	1/4"PT
	4"	119	101	75	95			1/2"PT NPT
	5"	130	114	75	97			
6"	160	140	75	107				



430A



430B



MODEL	NOMINAL SIZE	DIMENSIONS									
		A	B	C	D	E	F	G	J	H	L
430A	3"	85	70	100	4	25	45	76	89	6	Min. length } 500
	4"	119	101	137	4	25	45	108	122	6	
430B	3"	85	70	100	4	11	43	89		6	
	4"	118	101	137	4	11	45	122		6	
	6"	160	140	185	6		50	165		8	

SPECIFICATIONS

ITEMS \ CODE	420A	420B	420C	430A	430B
Main Type	Bimetal actuated				
Mounting Methdo	Back threaded	Bottom threaded	Adjustable angle	Panel mounted	Wall mounted
Connection Of Sensor	1/2"PT / NPT (St'd) or specially specified			Ferrule sliding thread or specified	
Structure	IP65 (DIN 40 050)				
Case & Cover	Stainless steel (1.4301 w / bayonet ring & glass window)				
Indicating Dial	Aluminium with white finish and surface with black markings or specially apesified				
ZERO Asjustment	None (St'd) ; External / Internal adjustable style should be specially specified				
Electric Contact	None			Possible for options	
Stem Length	Min. Length ~ 1500mm max.			Min. Length ~ 500mm (optional)	
O.D. Of Stem	6mm (St'd) ø4 ~ ø12mm (optional)			ø12mm (St'd) ø8~ø16mm (optional)	
Capillary Material / Length	None			S.S. 1.4301 / 15m max.	
Accuracy	± 1.0% F.S. According to DIN 16 203				
Operating Pressure	4 MPa mas.				
Ambient temp.	-25°C ~ +70°C				

SCALE RANGE

CODE	SCALE RANGE (°C)	OPERATING RANGE (°C)	SUBDIVISION (°C)
01	-50 ~ 50	-40 ~ 40	1
02	0 ~ 50	10 ~ 40	1
03	0 ~ 100	10 ~ 90	1
04	0 ~ 120	20 ~ 100	2
05	0 ~ 150	20 ~ 130	2
06	0 ~ 200	20 ~ 180	5
07	0 ~ 300	30 ~ 270	5
08	0 ~ 400	50 ~ 350	10
09	0 ~ 500	50 ~ 450	10
10	0 ~ 600	100 ~ 500	10
11	Specially specified		

MINIMUM STEM LENGTH (m/m)

CODE	ø 6	ø 8	ø 10	ø 12
01	100	90	80	70
02	100	90	80	70
03	100	90	80	70
04	100	90	80	70
05	100	90	80	70
06	100	90	80	70
07	80	70	60	50
08	80	70	60	50
09	60	50	45	40
10	60	50	45	40
11	Specially specified			

MODEL SELECTIONS

ITEM	CODE	SPECIFICATIONS
MODEL	420A	Back Thread Bimetal Thermometer
	420B	Bottom Thread Bimetal Thermometer
	420C	Angle Adjustable Bimetal Thermometer
DIAL SIZE	-0	ø70 (3")
	-2	ø114 (5")
	-4	Specially specified
ZERO ADJUSTMENT	0	Not required
	1	Required
PROCESS CONNECTION	0	Standard
	1	Specially specified
STEM LENGTH	-A	150 mm (standard)
	-B	Specially specified
STEM MATERIAL	A	304S.S. / 1.4301
	B	316S.S. / 1.4571
	C	Specially specified
CAPILLARY LENGTH	A	None (for 420 series)
	B	3m . (Standard for 430 series)
	C	Specially specified
CAPILLARY MATERIAL	A	None (for 420 series)
	B	304S.S. / 1.4301
	C	316S.S. / 1.4571
SCALE RANGE	-01	-50 ~ + 50°C
	-11	Specially specified

DOERS TECHNOLOGY CORPORATION

4F, NO. 1, LANE 11, TZU-CHIANG STREET, TU-CHENG INDUSTRIAL PARK, TAIPEI COUNTY, TAIWAN 23678

Http: //www.doers.com.tw

E-mail:doers.tech@msa.hinet.net

TEL : 886-2-22682689

FAX : 886-2-22681248

